



Where is Melvin the Rabbit?

The Melvin bunny, nice and a little distracted, has long ears and teeth that are always ready to nibble. Carrots from the garden and gnawed sticks are the traces to go in search of Melvin in this story. The games are based on the logical relationships between objects.

Subjects

Engineering (Visual-spatial intelligence)
Science

Social skills introduced

Friendship

Further information

Association games and logic matching can be very useful from an early age to train and stimulate particular skills (such as problem-solving) and mental processes. These types of games based on the relationships between objects contribute to the development of logic and math skills.



Suggested age

3 years

Difficulty of game



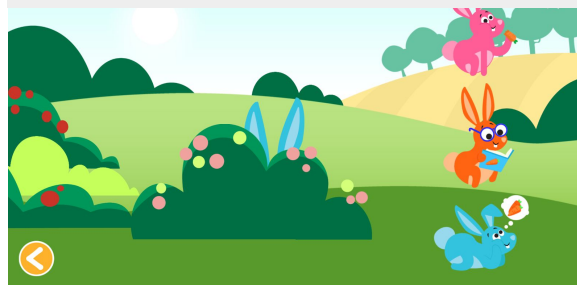
Learning objectives

- Logical relationships between objects (jigsaws, stickers)
- Visual attention

Drag the vegetables to the right place in the basket



Which rabbit is hiding behind the bush?



Put the tree trunk back together

